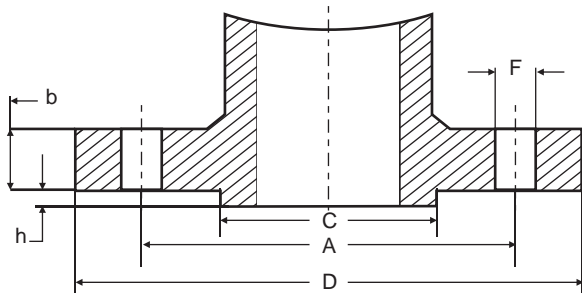


FLANGES DIMENSIONS - ASME B16.5

SIZES 1/2" ÷ 24"



- DN = NOMINAL PIPE SIZE
- D = OUTSIDE DIAMETER OF FLANGE
- b* = THICKNESS OF FLANGE MIN
- C = DIAMETER OF HUB
- h = HEIGHT OF RAISED FACE
- N = NUMBER OF BOLT HOLES
- f = DIAMETER OF BOLT HOLES
- A = DIAMETER OF BOLT CIRCLE
- RJ = GROOVE NUMBER

*raised face included for ANSI Class 150-300
 raised face not included for ANSI Class 600-900-1500-2500

CLASS	DN	D	b	C	h	N	f	A	RJ
150	1/2"	89	11.1	34.9	1.60	4	15	60.3	--
300	1/2"	95	14.3	34.9	1.60	4	15	66.7	11
600	1/2"	95	14.3	34.9	6.35	4	15	66.7	11
900-1500	1/2"	121	22.2	34.9	6.35	4	22	82.5	12
150	3/4"	98.4	12.7	42.9	1.60	4	15	69.8	
300	3/4"	118	15.9	42.9	1.60	4	18	82.5	13
600	3/4"	118	15.9	42.9	6.35	4	18	82.5	13
900-1500	3/4"	130	25.4	42.9	6.35	4	22	88.9	14
150	1"	108	14.3	50.8	1.60	4	15	79.4	15
300	1"	124	17.5	50.8	1.60	4	19	88.9	16
600	1"	124	17.5	50.8	6.35	4	19	88.9	16
900-1500	1"	149	28.6	50.8	6.35	4	25	102	16
150	1 1/4"	118	15.9	63.5	1.60	4	15	88.9	17
300	1 1/4"	133	19	63.5	1.60	4	18	98.4	18
600	1 1/4"	133	20.6	63.5	6.35	4	18	98.4	18
900-1500	1 1/4"	159	28.6	63.5	6.35	4	26	111	18
150	1 1/2"	127	17.5	73	1.60	4	15	98.4	19
300	1 1/2"	156	20.6	73	1.60	4	22	114	20
600	1 1/2"	156	22.2	73	6.35	4	22	114	20
900-1500	1 1/2"	178	31.8	73	6.35	4	30	124	20
150	2"	152	19	92.1	1.60	4	19	121	22
300	2"	165	22.2	92.1	1.60	8	18	127	23
600	2"	165	25.4	92.1	6.35	8	18	127	23
900-1500	2"	216	38.1	92.1	6.35	8	26	165	24
2500	2"	235	50.8	92.1	6.35	8	29	171	26
150	2 1/2"	178	22.2	105	1.60	4	19	140	25
300	2 1/2"	191	25.4	105	1.60	8	22	149	26
600	2 1/2"	191	28.6	105	6.35	8	22	149	26
900-1500	2 1/2"	245	41.3	105	6.35	8	30	191	27
2500	2 1/2"	267	57.2	105	6.35	8	32	197	28
150	3"	191	23.8	127	1.60	4	19	152	29
300	3"	210	28.6	127	1.60	8	22	168	31
600	3"	210	31.8	127	6.35	8	22	168	31
900	3"	241	38.1	127	6.35	8	25	191	31
1500	3"	267	47.6	127	6.35	8	32	203	35
2500	3"	305	66.7	127	6.35	8	34.9	229	32
150	4"	229	23.8	157	1.60	8	19	191	36
300	4"	254	31.7	157	1.60	8	22	200	37
600	4"	273	38.1	157	6.35	8	26	216	37
900	4"	292	44.45	157	6.35	8	32	235	37
1500	4"	311	54	157	6.35	8	35	241	39
2500	4"	356	76.2	157	6.35	8	41	273	38
150	5"	254	23.8	186	1.60	8	22	216	40
300	5"	279	34.9	186	1.60	8	22	235	41
600	5"	330	44.4	186	6.35	8	28	267	41
900	5"	349	50.8	186	6.35	8	36	279	41
1500	5"	375	73	186	6.35	8	42	292	44
2500	5"	416	92.1	186	6.35	8	48	324	42

CLASS	DN	D	b	C	h	N	f	A	RJ
150	6"	279	25.4	216	1.6	8	22	241	43
300	6"	318	36.4	216	1.6	12	22	270	45
600	6"	356	47.6	216	6.35	12	30	292	45
900	6"	381	55.6	216	6.35	12	32	318	45
1500	6"	394	82.6	216	6.35	12	39	318	46
2500	6"	483	108	216	6.35	8	54	368	47
150	8"	343	28.6	270	1.6	8	22	298	48
300	8"	381	41.3	270	1.6	12	26	330	49
600	8"	419	55.6	270	6.35	12	32	349	49
900	8"	470	63.5	270	6.35	12	39	394	49
1500	8"	483	92.1	270	6.35	12	45	394	50
2500	8"	552	127	270	6.35	12	54	438	51
150	10"	406	30.2	324	1.6	12	25	362	52
300	10"	445	47.6	324	1.6	16	28,6	387	53
600	10"	508	63.5	324	6.35	16	36	432	53
900	10"	546	69.8	324	6.35	16	38,1	470	53
1500	10"	584	108	324	6.35	12	52	483	54
2500	10"	673	165	324	6.35	12	67	540	55
150	12"	483	31.7	381	1.6	12	26	432	56
300	12"	521	50.8	381	1.6	16	32	451	57
600	12"	559	66.7	381	6.35	20	36	490	57
900	12"	610	79.4	381	6.35	20	39	533	57
1500	12"	673	124	381	6.35	16	55	572	58
2500	12"	762	184	381	6.35	12	73	619	60
150	14"	533	34.9	413	1.6	12	29	476	59
300	14"	584	54	413	1.6	20	32	514	61
600	14"	603	69.8	413	6.35	20	39	527	61
900	14"	641	85.7	413	6.35	20	42	559	62
1500	14"	749	133	413	6.35	16	60	635	63
150	16"	597	36.5	470	1.6	16	28	540	64
300	16"	648	57.2	470	1.6	20	36	572	65
600	16"	686	76.2	470	6.35	20	42	603	65
900	16"	705	88.9	470	6.35	20	45	616	66
1500	16"	826	146	470	6.35	16	65	705	67
150	18"	635	39.7	533	1.6	16	32	578	68
300	18"	711	60.3	533	1.6	24	36	629	69
600	18"	743	82.6	533	6.35	20	45	654	69
900	18"	787	102	533	6.35	20	52	686	70
1500	18"	914	162	533	6.35	16	75	775	71
150	20"	699	42.9	584	1.6	20	32	635	72
300	20"	775	63.5	584	1.6	24	36	686	73
600	20"	813	88.9	584	6.35	24	45	724	73
900	20"	857	108	584	6.35	20	55	749	74
1500	20"	984	178	584	6.35	16	80	832	75
150	24"	813	47.6	692	1.6	20	36	749	76
300	24"	914	69.8	692	1.6	24	42	813	77
600	24"	940	102	692	6.35	24	52	838	77
900	24"	1041	140	692	6.35	20	65	902	78
1500	24"	1168	203	692	6.35	16	93	991	79

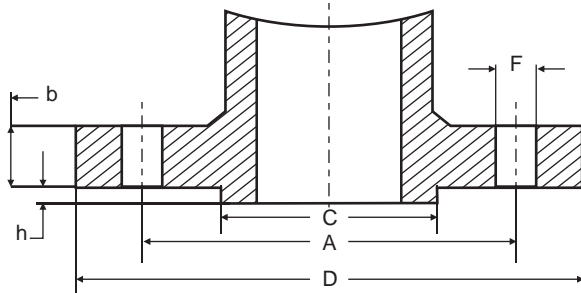
All dimensions in mm (except wher differently indicated)

All data, subject to technical changes, are only for informations and note for official use.

LARGE DIAMETER STEEL FLANGES

SERIES A ASME B16.47 - MSS SP-44

SIZES - 26" ÷ 48"



- DN = NOMINAL PIPE SIZE
- D = OUTSIDE DIAMETER OF FLANGE
- b* = THICKNESS OF FLANGE MIN
- C = DIAMETER OF HUB
- h = HEIGHT OF RAISED FACE
- N = NUMBER OF BOLT HOLES
- f = DIAMETER OF BOLT HOLES
- A = DIAMETER OF BOLT CIRCLE
- RJ = GROOVE NUMBER

*raised face included for ANSI Class 150-300
 raised face not included for ANSI Class 600-900-1500-2500

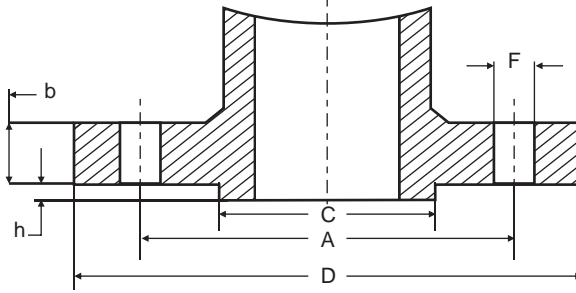
CLASS	DN	D	b	C	h	N	f	A	RJ
150	26"	870	68.3	749	1.6	24	35.1	806	
300	26"	972	79.2	749	1.6	28	44.5	876	93
600	26"	1016	108.0	749	1.6	28	50.8	914	93
900	26"	1086	139.7	953	1.6	20	73.2	953	100
150	28"	927	71.4	800	1.6	28	35.1	864	
300	28"	1035	85.9	800	1.6	28	44.5	940	94
600	28"	1073	111.3	800	1.6	28	53.8	965	94
900	28"	1168	142.7	1022	1.6	20	79.2	1022	101
150	30"	984	74.7	857	1.6	28	35.1	914	
300	30"	1092	91.9	857	1.6	28	47.8	997	95
600	30"	1130	114.3	857	1.6	28	53.8	1022	95
900	30"	1232	149.4	1086	1.6	20	79.2	1086	102
150	32"	1060	81.0	914	1.6	28	41.1	978	
300	32"	1149	98.6	914	1.6	28	50.8	1054	96
600	32"	1194	117.3	914	1.6	28	60.5	1080	96
900	32"	1314	158.8	1156	1.6	20	85.9	1156	103
150	34"	1111	82.6	965	1.6	32	41.1	1029	
300	34"	1207	101.6	965	1.6	28	50.8	1105	97
600	34"	1245	120.7	965	1.6	28	60.5	1130	97
900	34"	1397	165.1	1226	1.6	20	91.9	1226	104
150	36"	1168	90.4	1022	1.6	32	41.1	1086	
300	36"	1270	104.6	1022	1.6	32	53.8	1168	98
600	36"	1314	124.0	1022	1.6	28	66.5	1194	98
900	36"	1461	171.5	1289	1.6	20	91.9	1289	105

All dimensions in mm (except whrer differently indicated)

CLASS	DN	D	b	C	h	N	f	A	RJ
150	38"	1238	87.4	1073	1.6	32	41.1	1149	
300	38"	1168	108.0	1029	1.6	32	41.1	1092	
600	38"	1270	152.4	1054	1.6	28	60.5	1162	
900	38"	1461	190.5	1289	1.6	20	91.9	1289	
150	40"	1289	90.4	1124	1.6	36	41.1	1200	
300	40"	1238	114.3	1086	1.6	32	44.5	1156	
600	40"	1321	158.8	1111	1.6	32	60.5	1213	
900	40"	1511	196.9	1340	1.6	24	91.9	1340	
150	42"	1346	96.8	1194	1.6	36	41.1	1257	
300	42"	1289	119.1	1137	1.6	32	44.5	1207	
600	42"	1403	168.1	1168	1.6	28	66.5	1283	
900	42"	1562	206.2	1391	1.6	24	91.9	1391	
150	44"	1403	101.6	1245	1.6	40	41.1	1314	
300	44"	1353	124.0	1194	1.6	32	47.8	1264	
600	44"	1454	173.0	1226	1.6	32	66.5	1334	
900	44"	1648	214.4	1464	1.6	24	98.6	1464	
150	46"	1454	103.1	1295	1.6	40	41.1	1365	
300	46"	1416	128.5	1245	1.6	28	50.8	1321	
600	46"	1511	179.3	1276	1.6	32	66.5	1391	
900	46"	1734	225.6	1537	1.6	24	105	1537	
150	48"	1511	108.0	1359	1.6	44	41.1	1422	
300	48"	1467	133.4	1302	1.6	32	50.8	1372	
600	48"	1594	189.0	1334	1.6	32	73.2	1461	
900	48"	1784	233.4	1588	1.6	24	105	1588	

All data, subject to technical changes, are only for informations and note for official use.

DIN FLANGES DIMENSIONS DN-10 ÷ DN 300



- DN = NOMINAL PIPE SIZE
- D = OUTSIDE DIAMETER OF FLANGE
- b = THICKNESS OF FLANGE MIN.
- C = DIAMETER OF HUB
- h = HEIGHT OF RAISED FACE
- N = NUMBER OF BOLT HOLES
- f = DIAMETER OF BOLT HOLES
- A = DIAMETER OF BOLT CIRCLE

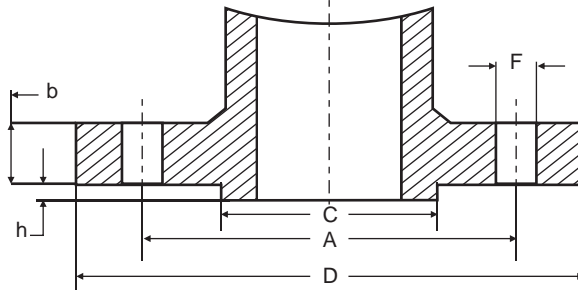
PN	DN	D	b	C	h	N	f	A
6	10	75	12	35	2	4	11	50
10-16	10	90	14	40	2	4	14	60
25-40	10	90	16	40	2	4	14	60
64-100	10	100	20	40	2	4	14	70
160	10	100	20	40	2	4	15	70
250	10	125	24	40	2	4	18	85
6	15	80	12	40	2	4	11	55
10-16	15	95	14	45	2	4	14	65
25-40	15	95	16	45	2	4	14	65
64-100	15	105	20	45	2	4	14	75
160	15	105	20	45	2	4	15	75
250	15	130	26	45	2	4	18.5	90
6	20	90	14	50	2	4	11	65
10-16	20	105	16	58	2	4	14	75
25-40	20	105	18	58	2	4	14	75
64-100	20	130	24	58	2	4	18	90
6	25	100	14	60	2	4	11	75
10-16	25	115	16	68	2	4	14	85
25-40	25	115	18	68	2	4	14	85
64-100	25	140	24	68	2	4	18	100
160	25	140	24	68	2	4	18	100
250	25	150	28	68	2	4	19	105
6	32	120	14	70	2	4	14	90
10-16	32	140	16	78	2	4	18	100
25-40	32	140	18	78	2	4	18	100
64-100	32	155	24	78	2	4	22	110
6	40	130	14	80	3	4	14	100
10-16	40	150	16	88	3	4	18	110
25-40	40	150	18	88	3	4	18	110
64-100	40	170	26	85	3	4	22	125
160	40	170	28	88	3	4	21	125
250	40	185	34	88	3	4	25	135
6	50	140	14	90	3	4	14	110
10-16	50	165	18	102	3	4	18	125
25-40	50	165	20	102	3	4	18	125
64	50	180	26	102	3	4	22	135
100	50	195	28	102	3	4	26	145
160	50	195	30	102	3	4	23	145
250	50	200	38	102	3	5	26	150
6	65	160	14	110	3	4	14	130
10-16	65	185	18	122	3	4	18	145
25-40	65	185	22	122	3	8	18	145
64	65	205	26	120	3	8	22	160
100	65	220	30	120	3	8	26	170
160	65	220	34	122	3	8	24	180
250	65	230	42	122	3	8	30	180
6	80	190	16	128	3	4	18	150
10	80	200	20	138	3	8	18	160
16	80	200	20	138	3	8	18	160
25-40	80	200	24	138	3	8	18	160
64	80	215	28	138	3	8	22	170
100	80	230	32	138	3	8	24	180
160	80	230	36	138	3	8	24	180
250	80	255	46	138	3	8	31	200

PN	DN	D	b	C	h	N	f	A
6	100	210	16	148	3	4	18	170
10-16	100	220	20	158	3	8	18	180
25-40	100	235	24	162	3	8	22	190
64	100	250	30	162	3	8	26	200
100	125	265	36	162	3	8	30	210
160	100	265	40	162	3	8	25	210
250	100	300	54	162	3	8	34	235
6	125	240	18	178	3	8	18	200
10-16	125	250	22	188	3	8	18	210
25-40	125	270	26	188	3	8	26	220
64	125	295	34	188	3	8	30	240
100	125	315	40	188	3	8	33	250
160	125	315	44	188	3	8	29.5	250
250	125	340	60	188	3	12	41	275
6	150	265	18	202	3	8	18	225
10-16	150	285	22	212	3	8	22	240
25-40	150	300	28	218	3	8	26	250
64	150	345	36	218	3	8	33	280
100	150	355	44	218	3	12	33	290
160	150	355	50	218	3	12	37	290
250	150	390	68	218	3	12	48	320
6	175	295	20	232	3	8	18	255
10-16	175	315	24	242	3	8	22	270
25	175	330	28	248	3	12	26	280
40	175	350	32	260	3	12	30	295
64	175	375	40	260	3	12	33	310
100	175	385	48	260	3	12	33	320
160	175	390	54	260	3	12	37.5	320
250	175	430	74	260	3	12	50	355
6	200	320	20	258	3	8	18	280
10	200	340	24	268	3	8	22	295
16	200	340	24	268	3	12	22	295
25	200	360	30	278	3	12	26	310
40	200	375	34	285	3	12	30	320
64	200	415	42	285	3	12	36	345
100	200	430	52	285	3	12	36	360
160	200	430	60	285	3	12	44	360
250	200	485	82	285	3	12	57	400
6	250	375	22	312	3	12	18	335
10	250	395	26	320	3	12	22	350
16	250	405	26	320	3	12	26	355
25	250	425	32	335	3	12	30	370
40	250	450	38	345	3	12	33	385
64	250	470	46	345	3	12	36	400
100	250	505	60	345	3	12	39	430
160	250	515	68	345	3	12	48	430
250	250	585	100	345	3	16	72	490
6	300	440	22	365	4	12	22	395
10	300	445	26	370	4	12	22	400
16	300	460	28	378	4	12	26	410
25	300	485	34	390	4	16	30	430
40	300	515	42	410	4	16	33	450
64	300	530	52	410	4	16	36	460
100	300	585	68	410	4	16	42	500
160	300	585	78	410	4	16	57	500
250	300	690	120	410	4	16	90	590

All dimensions in mm (except whrer differently indicated)

All data, subject to technical changes, are only for informations and note for official use.

DIN FLANGES DIMENSIONS DN-350 ÷ DN 1200



DN = NOMINAL PIPE SIZE
 D = OUTSIDE DIAMETER OF FLANGE
 b = THICKNESS OF FLANGE MIN.
 C = DIAMETER OF HUB
 h = HEIGHT OF RAISED FACE
 N = NUMBER OF BOLT HOLES
 f = DIAMETER OF BOLT HOLES

PN	DN	D	b	C	h	N	f	A
6	350	490	22	415	4	12	22	445
10	350	505	26	430	4	16	22	460
16	350	520	30	438	4	16	26	470
25	350	555	38	450	4	16	33	490
40	350	580	46	465	4	16	36	510
64	350	600	56	465	4	16	39	525
100	350	655	74	465	4	16	48	560
6	400	540	22	465	4	16	22	495
10	400	565	26	482	4	16	26	515
16	400	580	32	490	4	16	30	525
25	400	620	40	505	4	16	36	550
40	400	660	50	535	4	16	39	585
64	400	670	60	535	4	16	42	585
100	400	715	78	535	4	16	48	620
6	450	595	22	520	4	16	22	550
10	450	615	26	532	4	20	26	565
16	450	640	32	550	4	20	30	585
25	450	670	40	555	4	20	36	600
40	450	685	50	560	4	20	39	610
64	450	715	64	560	4	20	42	630
100	450	770	86	560	4	20	48	675
6	500	645	24	570	4	20	22	600
10	500	670	28	585	4	20	26	620
16	500	715	36	610	4	20	33	650
25	500	730	44	615	4	20	36	660
40	500	755	52	615	4	20	42	670
64	500	800	68	615	4	20	48	705
100	500	870	94	615	4	20	56	760
6	600	755	24	670	5	20	26	705
10	600	780	28	685	5	20	30	725
16	600	840	40	725	5	20	36	770
25	600	845	46	720	5	20	39	770
40	600	890	54	735	5	20	48	795
64	600	930	76	735	5	20	56	820
100	600	990	104	735	5	20	62	875

All dimensions in mm (except whrer differently indicated)

PN	DN	D	b	C	h	N	f	A
6	700	860	24	775	5	24	25	810
10	700	895	30	800	5	24	30	840
16	700	910	42	795	5	24	36	840
25	700	960	50	820	5	24	42	875
40	700	995	64	840	5	24	48	900
64	700	1045	84	840	5	24	56	935
100	700	1145	120	840	5	24	70	1020
6	800	975	24	880	5	24	30	920
10	800	1015	32	905	5	24	33	950
16	800	1025	42	900	5	24	39	950
25	800	1085	64	930	5	24	48	990
40	800	1165	72	960	5	24	62	1050
64	800	1165	92	960	5	24	62	1050
100	800	n.a	n.a	n.a	n.a	n.a	n.a	n.a
6	900	1075	26	980	5	24	30	1020
10	900	1115	34	1005	5	28	33	1050
16	900	1125	44	1000	5	28	39	1050
25	900	1185	68	1030	5	28	48	1090
40	900	1250	78	1070	5	28	56	1140
64	900	1285	98	1070	5	28	62	1170
100	900	n.a	n.a	n.a	n.a	n.a	n.a	n.a
6	1000	1175	26	1080	5	28	30	1120
10	1000	1230	34	1110	5	28	36	1160
16	1000	1255	46	1115	5	28	42	1170
25	1000	1320	62	1140	5	28	56	1210
40	1000	1360	80	1180	5	28	56	1250
64	1000	1415	108	1180	5	28	70	1290
100	1000	n.a	n.a	n.a	n.a	n.a	n.a	n.a
6	1200	1405	28	1295	5	32	33	1340
10	1200	1455	38	1330	5	32	39	1380
16	1200	1485	52	1330	5	32	48	1390
25	1200	1530	70	1350	5	32	56	1420
40	1200	1575	88	1380	5	32	62	1460
64	1200	1665	126	1380	5	32	78	1530
100	1200	n.a	n.a	n.a	n.a	n.a	n.a	n.a

All data, subject to technical changes, are only for informations and note for official use.